

A Managing Urban Europe Initiative

CHAMP

Local Response to Climate Change



The European Partnership for Integrated Sustainability Management

Pekka Salminen,
Project Manager,
Union of the Baltic Cities



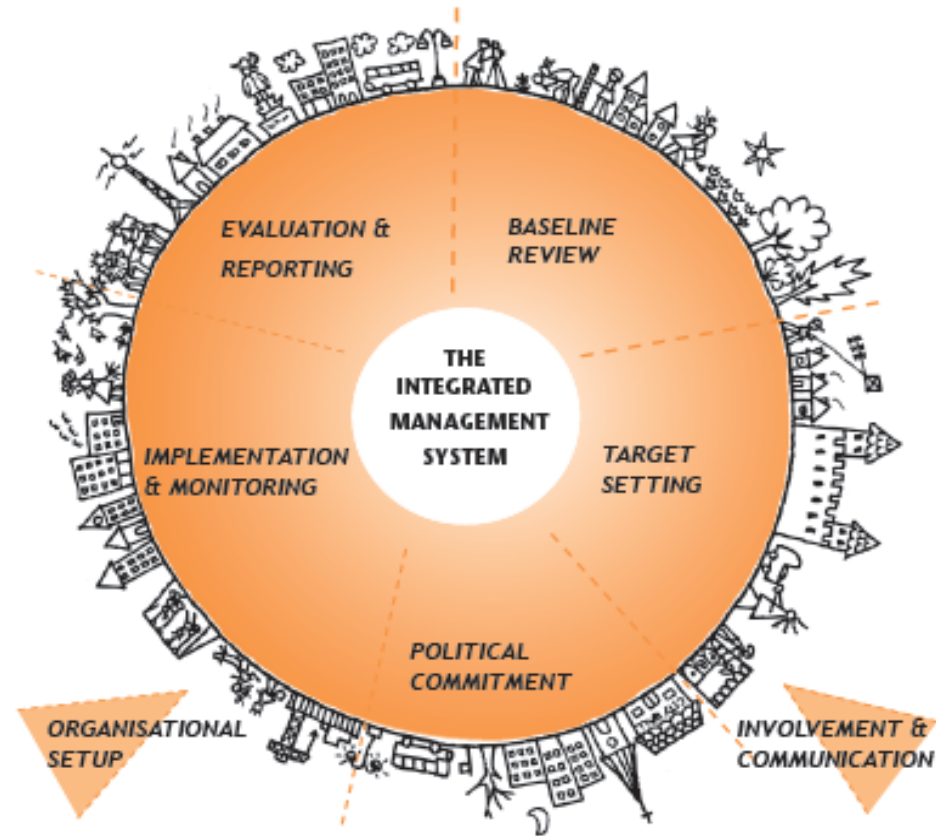
The European Partnership

WORKING TOGETHER TO MAINSTREAM
INTEGRATED MANAGEMENT
OF SUSTAINABLE
CITIES AND REGIONS



Integrated Management System for Sustainability (IMS)

- a **framework** for organising work
- a systematic, continuous **process**
- Plan-Do-Check-Act **cycle** but with 5th step and cross cutting elements included
- Integrates different sectors, actors and all sustainability factors in the **whole urban area**
- Based on and harmonized with EMAS /ISO 14.001
- To integrate different initiatives and to implement them systematically



A Managing Urban Europe Initiative

CHAMP

Local Response to Climate Change

Key challenges...

...on the way of mainstreaming
effective response to climate change
and
more sustainable Europe

No continuous support:

- 1. Lack of localised tools and guidance materials*
- 2. Lack of continuous training and support*
- 3. Lack of resources*



European Partnership for Integrated Sustainability Management

The mission:

mainstream integrated approach to build sustainable cities and regions.

MEMBERS

Supporting members

(Universities, etc.)

National training hubs:

Supporting cities & regions to implement EU policies and initiatives in a systematic way using IMS (EU 2020, CoM, AC, RFSC, ...)

Capacity Development Portal

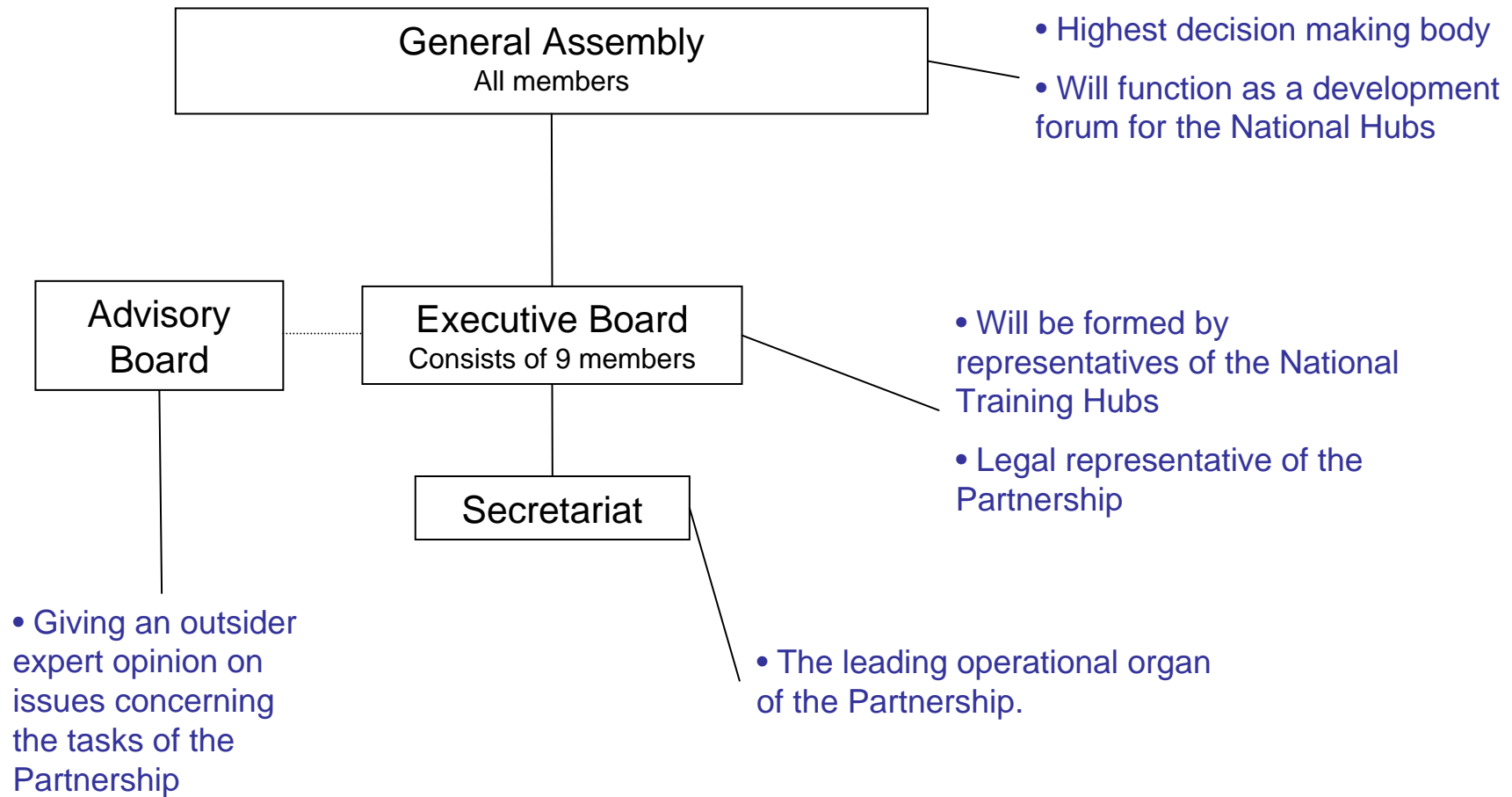
Practical tools and contacts for trainers and cities to implement EU policies and initiatives

Training, promotion, support
CLIENTS / BENEFICIARIES

City
City
City
City
City



Partnership Administration



The Role of the National Training Hubs:

- **Develop and maintain localised Capacity Development Materials (web portal)**
- **Training workshops for local authorities**
- **Facilitate Peer reviews**
- **Promotion of EU policies and initiatives on local and regional level**
- **Exchange of knowledge and training materials/methods through the European Partnership**



The Capacity Development Portal

- Existing materials will be gathered and updated under one portal (www.localmanagement.eu)
 - IMS guidelines, Case studies, Tools & Methods, Key indicators, etc.
 - **Possible other materials to be integrated:** SEAP Guidebook, RFSC self evaluation and benchmarking tool, Aalborg Commitments, The Procura+ Manual, Stake holder involvement toolkit, ...



Example of existing guidance

Integrated Management for Local Climate Change Response CAPACITY DEVELOPMENT PACKAGE



Local authorities

Trainers and consultants

Auditors

Multipliers

Introduction » Local authorities » Baseline review



Introduction to the Climate Baseline Review

Planning the Baseline Review
Map the local situation
Evaluate the local situation
Present the findings

1. Introduction to the Climate Baseline Review

What is our city or region's carbon footprint?
How will the local and regional climate change?
Which sectors and actors are contributing to this and how much?
What risks and opportunities will arise from climate change?
Is the current local and regional management related to climate & energy set up resiliently?
What legal requirements need to be fulfilled?
What sectors have opportunities to act – both in climate mitigation and adaptation programmes?
What priority areas should be focused on?

These are some of the important questions addressed by a [Climate Baseline Review](#). The review aims at creating a solid basis for setting priorities and targets in a city's or region's climate change response. It takes stock of present climate conditions and expected changes and helps to evaluate strengths and weaknesses, risks and opportunities in terms of climate [mitigation](#) and [adaptation](#) efforts.

The [Baseline Review](#) will inform all following steps in the management cycle and allow to set targets and draft a climate strategy – stand alone

[BASELINE REVIEW](#)

[TOOLS & METHODS](#)

[GOOD PRACTICES](#)

[FURTHER RESOURCES](#)

[GLOSSARY](#)

Next Steps

- On-line guidebook of IMS for Climate Change and other training materials will be published
- Statute of the Partnership will be finalised together with the Hubs
- Secretariat established
- Executive Board nominated
- Action plan for the next year
- Train the trainers event for the National Training Hubs



*If you want to be incrementally better:
Be competitive.*

*If you want to be exponentially better:
Be cooperative.*



THANK YOU!

